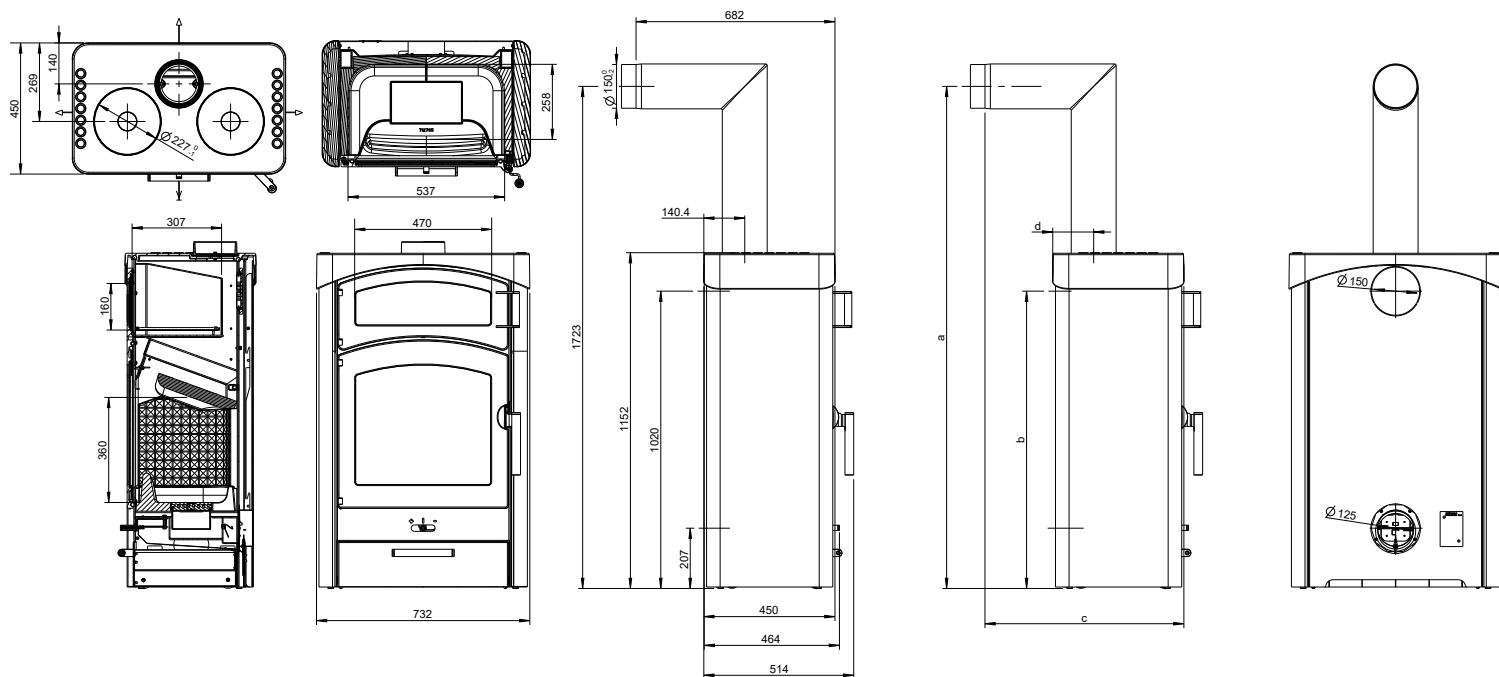


PALLAS BACK


AUSTROFLAMM



www.austroflamm.com

Dimensions and weight	
Height [mm]	1152
Width [mm]	732
Depth [mm]	464
Combustion chamber width [mm]	537
Combustion chamber height [mm]	360
Combustion chamber depth [mm]	258
Baking compartment width [mm]	470
Baking compartment height [mm]	160
Baking compartment depth [mm]	307
Warming drawer, width [mm]	-
Warming compartment height [mm]	-
Warming drawer, depth [mm]	-
Dimensions, a (with Austroflamm elbow piece) [mm]	1723
Dimensions, b (with Austroflamm elbow piece) [mm]	1020
Dimensions, c (with Austroflamm elbow piece) [mm]	682
Dimensions, d (with Austroflamm elbow piece) [mm]	140
Flue pipe outlet, diameter [mm]	150
Outside air connection diameter [Ø mm]	125
Weight, basic appliance [kg]	182
Weight Xtra [kg]	-
Weight, HMS [kg]	86
Total weight inc. steel case (STM) [kg]	193
Total weight inc. ceramic case (KGM) [kg]	223
Total weight inc. soapstone case (SPM) [kg]	319
a: Safety distance to combustible materials, front [mm]	800
b: Safety distance to combustible materials, left [mm]	200
c: Safety distance to combustible materials, rear [mm]	200
d: Safety distance to combustible materials, right [mm]	200
Safety distance to combustible materials, floor [mm]	0
Output	
Nominal heat efficiency [kW]	9.0
Minimum heat output [kW]	4.5
Maximum heat output [kW]	13.0
Minimum room heating capacity [m³]	114
Maximum room heating capacity [m³]	305
Energy efficiency class	A
Data for the chimney sweep	
Exhaust gas mass flow [g/s]	9.2
Flue gas temperature [°C]	310
Minimum delivery pressure at nominal heat output [Pa]	12
at 0.8 times nominal heat output [Pa]	10
Equipment	
Xtra heat storage technology	-
Heat Memory System	Accessories
External air connection / operation independent of ambient air	No
Ash removal	Flat bed firing